



SPYDER

WWW.SPYDERAUTO.COM

INSTALLATION GUIDE:

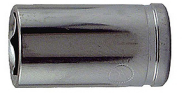
ALT-YD-N350Z02-LED (ALL COLORS)

Tools Required

10mm Socket, 3/4" Ratchet and Panel Popper or Flat-head Driver

Please Note

If you are unfamiliar with the installation processes, professional installation is highly recommended.



1) Start by opening your trunk and locating the (3) plastic fasteners. Using the panel popper tool or flat-head, gently pry the fasteners free and set them aside for later.



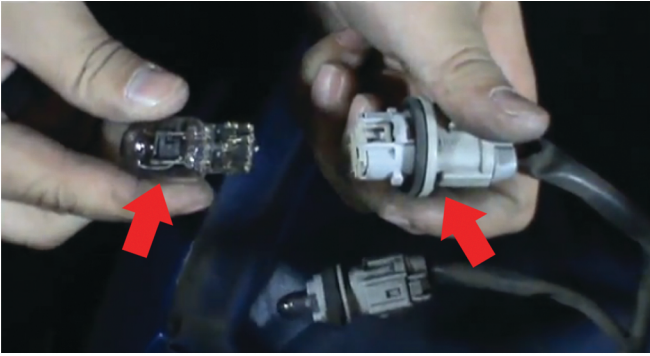
2) Once the fasteners have been removed, you will need to remove (3) 10mm nuts, shown here. Unscrew these bolts and set aside for later use, you will reuse these bolts to for your new Spyder lights.



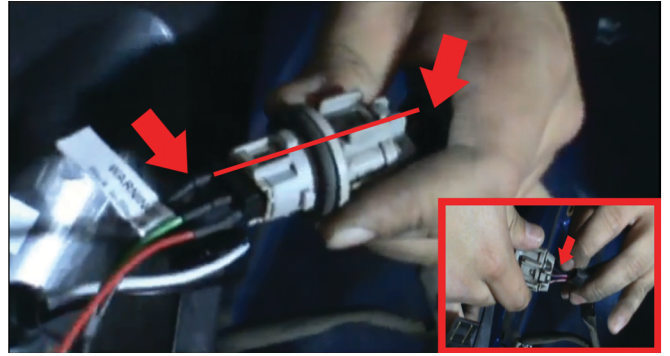
3) Next, gently push outwards from the back of the tail light to get it free. Still attached will be the tail light harness (arrows). With moderate force, twist the socket counter clockwise to unlatch it from the tail light. set OEM assembly aside.



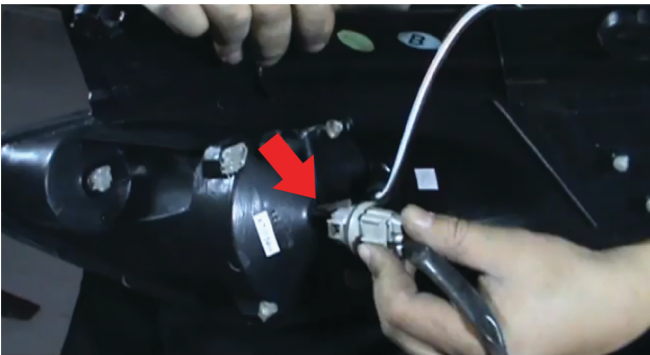
4) Shown here is the running light harness from the vehicle and the LED running light wires from the Spyder lights. You will need to splice these wires together, Black with black and white with red. Note: you can identify the running light by the bulb sizing, running light will be the smaller bulb of the two shown.



5) In order to connect the brake light function of your Spyder lights, gently pull on the brake light bulb until it pops free of the harness as shown above. Note: you can identify the brake bulb by the bulb sizing, brake bulb will be the larger bulb of the two shown.



6) Next, once the brake bulb has been removed you can now insert the clip from the Spyder tail light into the brake bulb socket. Be sure you are lining up the black ground wires of both sides, installing this incorrectly can damage the harness, LED's and fuses.



7) Now that everything is wired and connected, twist the socket from the brake harness into the tail light housing clockwise. Be sure it is seated properly to prevent any condensation in the tail lights.



8) Finally, seat the head light back on the vehicle lining up the mounting holes with the bolt holes. Once this is done reinstall the (3) 10mm bolts and plastic fasteners. Complete these instructions for both sides.



Congratulations on completing the installation for your new Spyder head lights for the 2002-2005 NISSAN 350Z.



SPYDER
WWW.SPYDERAUTO.COM

For further help with installation, please watch our installation video. Follow the direct link below to our YouTube channel for more information.

<http://www.youtube.com/watch?v=yPt6-NO3ce4>

Disclaimer

Spyder Auto Installation Guide is not liable for damages, injuries, and death while installing the product. This is intended to be an installation guide, to cut down installation time for you. We have no responsibility for improper installation, if you do not know how to install, please have a professional install it.